

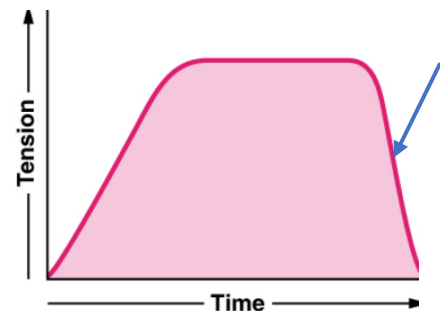
FINAL COLLECTED QUESTIONS OF MSS 017

1- Which of the following leads to a shorter contraction period?

- a. Giving a stimulation with subthreshold voltage
- b. Tetanization
- c. Studying deep thigh muscles instead of ocular muscles
- d. Increasing temperature

2-The phase indicated by the arrow is called:

- a. Tetanization
- b. Fatigue
- c. Latent phase
- d. Contraction phase



3-All of the following are peripheral causes of vertigo except:

- a. BPPV
- b. Vestibular Neuritis
- c. Meniere's disease
- d. Migrainous vertigo

4- A 30-year-old women came to the clinic complaining from recurrent dizziness and feeling of spinning that last for a few seconds whenever she gets up quickly from her bed. She has no hearing problems and her vital signs are good. What is the best diagnosis for this case?

- a. BPPV
- b. Vestibular Neuritis
- c. Meniere's disease
- d. Migrainous vertigo

5-Which of the following is wrong about lumbar vertebrae:

- a. They have bifid spinous processes
- b. They are larger than cervical vertebrae
- c. They have kidney-shaped body
- d. Their spinous processes are thick and short

6-Which of the following is true regarding deep muscles of the back?

- a. They help in respiration
- b. They are fatigue resistant
- c. They stabilize the shoulder girdle
- d. Latissimus dorsi is an example

7-All of the following are characteristic signs of basilar fractures, except:

- a. Racoon's eyes
- b. Concussions
- c. Rhinorrhea of CSF
- d. Ecchymosis behind the auricle

8-Which of the following is true regarding subdural and epidural hematomas?

- a. Epidural hematomas are poorly localized
- b. Epidural hematomas are usually crescent shaped
- c. Subdural hematomas are mostly venous
- d. Epidural hematomas are located between dura and arachnoid mater

9-Which of the following drugs is not used for acute gouty arthritis?

- a. Probenecid
- b. Steroids
- c. Ibuprofen
- d. Colchicine

10- Which of the following spasmolytic drugs works by activating α_2 receptors?

- a. Tizanidine
- b. Dantrolene
- c. Gabapentin
- d. Baclofen

11- To lower uric acid levels in blood and urine you should use:

- a. Colchicine
- b. Indomethacin
- c. Allopurinol
- d. Corticosteroids

12-Which of the following drugs is the safest during pregnancy?

- a. Acetaminophen
- b. Naproxen
- c. Ibuprofen
- d. Aspirin

13-Which of the following is used to treat patent ductus arteriosus?

- a. Peroxicam
- b. Indomethacin
- c. Diclofenac
- d. Paracetamol

14-Which of the following is least associated with GI irritation?

- a. Aspirin
- b. Ibuprofen
- c. Meloxicam
- d. Naproxen

15-Which of the following is true regarding Reye's syndrome?

- a. It is a self-limiting disease
- b. It is more prevalent in adults
- c. Hepatic damage is the most dangerous effect
- d. Aspirin consumption is essential for development of disease

16-Which of the following is a true regarding depolarizing and non-depolarizing neuromuscular blockers?

- a. They have the same chemical structure
- b. They have different modes of elimination
- c. They have the same duration of action
- d. They generally work on different targets

17-What makes staph aureus the worst in osteomyelitis?

- a. Biofilm production
- b. Resistance to many antibiotics
- c. Resistance to neutrophils response and secreting toxins damaging surrounding tissues
- d. The ability to form dormant spores

18-Which of the following is false regarding *Pseudomonas aeruginosa*?

- a. It can cause ecthyma gangrenosum in neutropenic patients
- b. Aminoglycosides can't be used in empirical treatment
- c. It can cause a superficial infection in hair follicles and apocrine structures
- d. It is commonly seen in hospital settings

19- Which of the following can be seen in the figure below?

- a. Folliculitis
- b. SJS syndrome
- c. Erythema multiforme
- d. Cellulitis



20- Which of the following is true regarding diabetic foot?

- a. Diabetic foot infections carry high mortality and low morbidity burden
- b. The causative agents are the same bugs that cause these infections in traditional conditions
- c. It is confined to diabetic foot ulcer
- d. All of the above

21- Which of the following statements is false?

- a. Large nodules are a feature of secondary syphilis
- b. Leprosy is characterized by the very long incubation period
- c. Schistosomiasis can be diagnosed by detecting eggs in stool
- d. Condyloma acuminatum is commonly found among HIV patients

22- Which of the following is true regarding septic arthritis?

- a. It is an inflammatory reaction so it can occur without an infectious agent
- b. Contiguous spread is the most common route
- c. *S. aureus* infections are prominent in previously damaged joints thanks to the adhesion factors they possess
- d. None of the above

23- A body builder was taking steroids and had severe pain in the hip joint. A biopsy of the head of femur showed a pyramidal shaped abnormality. What would you say to this patient?

- a. Taking steroids caused his condition
- b. After prolonged treatment, his bone will be as strong as ever
- c. He just needs to take some pain killers
- d. He must get admitted. Most likely a tumor is causing his condition

24- A 5-year-old kid is present with throbbing pain in his proximal femur and fever. Blood tests show leukocytosis. What would you say regarding this condition?

- a. Reassure the parents, there is nothing to worry about
- b. Admit the patient and order a radiograph for possible osteomyelitis

- c. Discharge the patient and tell the parents to come back if any complications happen
- d. It's most likely a closed fracture, external fixation should be done

25-Which of the following is wrong regarding rheumatoid arthritis?

- a. TNF is the major mediator in pathogenesis
- b. Distal interphalangeal joints are most affected
- c. It is a chronic inflammatory auto-immune disease
- d. Up to 80% of patients are seropositive for antibodies that attack self-antibodies

26-A patient is present with an open fracture. The first procedure is:

- a. Check nerve injury
- b. Give antibiotics
- c. Rapid closure of the wound
- d. Debridement of the affected tissue

27-Which one of the following is not an x ray feature of DJD?

- a. Narrowing of joint space
- b. Osteophytes
- c. Reduced bone density
- d. Cyst formation

28-This section is best described as:

- a. Benign tumor of smooth muscle
- b. Leiomyosarcoma
- c. The most common soft tissue tumor
- d. The malignant prototype of skeletal muscles tumors



29-Which of the following arches form hyoid bone?

- a. 1st arch
- b. 2nd arch
- c. 3rd arch
- d. b+c

30-The tympanic cavity is formed by:

- a. 1st arch
- b. 1st and 2nd arches
- c. 1st pouch
- d. 1st cleft

31-Glossopharyngeal nerve supplies muscles of which arch?

- a. 1st arch
- b. 2nd arch
- c. 3rd arch
- d. 4th and 6th arches

32-Oblique facial cleft results from the failure in fusion of:

- a. Maxillary and lateral nasal prominences
- b. Medial nasal prominences
- c. Maxillary prominences
- d. Maxillary and medial nasal prominences

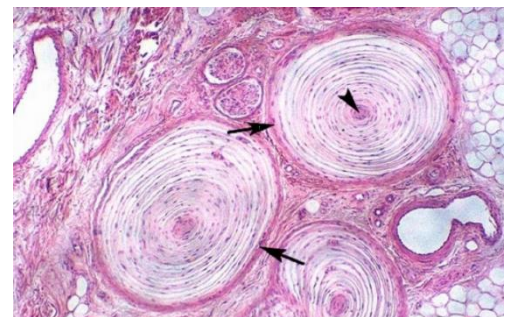
33-Which of the following is false regarding this section?

- a. It is found in thin skin such as the upper eyelid
- b. Both eccrine sweat glands and sebaceous glands can be seen
- c. The inner root sheath ends at the level of sebaceous glands
- d. None of the above is false



34-The labelled structure is:

- a. Meissner's corpuscle
- b. Pacinian corpuscle
- c. Hair root
- d. Apocrine sweat glands



35-Which of the following is wrong regarding lymph drainage of the neck?

- a. Deep cervical lymph nodes drain only from the neck
- b. Superficial cervical nodes are superficial to sternocleidomastoid muscle
- c. The intermediate tendon of omohyoid divides deep cervical nodes into upper and lower groups
- d. The jugulo-omohyoid node receives drainage from the tongue

36-Which of the following is false about triangles of the neck?

- a. The inferior belly of omohyoid muscle divides the posterior triangle into two triangles
- b. Hypoglossal nerve passes through posterior triangle
- c. The anterior triangle is bordered superiorly by the mandible
- d. The trachea and esophagus are contents of the muscular triangle

37-All of the following are innervated by ansa cervicalis except:

- a. Sternothyroid
- b. Sternohyoid
- c. Omohyoid
- d. Thyrohyoid

38-When a patient is looking laterally, what is the most suitable eye muscle for looking inferiorly?

- a. Inferior oblique
- b. Inferior rectus
- c. Lateral rectus
- d. Superior oblique

39- What happens to the cornea if all extra ocular muscles are paralyzed except inferior oblique?

- a. It is adducted only
- b. It is adducted and depressed
- c. It is adducted and elevated
- d. It is abducted and elevated

40-Which of the following muscles is supplied by 2 different cranial nerves?

- a. Platysma
- b. Mylohyoid muscle
- c. Digastric muscle
- d. Sternocleidomastoid muscle

41-Which of the following is a symptom of Horner's syndrome?

- a. Complete ptosis
- b. Increased sweating
- c. Exophthalmos
- d. Constriction of pupil

42-The correct path of vestibulocochlear nerve is:

- a. Hypoglossal canal > neck
- b. Internal acoustic meatus > Inner Ear
- c. Foramen rotundum > Pterygopalatine fossa
- d. Internal acoustic meatus > stylomastoid foramen

43-Lateral rectus muscle is innervated by:

- a. Abducent nerve
- b. Ophthalmic nerve
- c. Oculomotor nerve
- d. None of the above

44- Which of the following structures pass through superior orbital fissure outside common tendinous ring?

- a. Nasociliary nerve

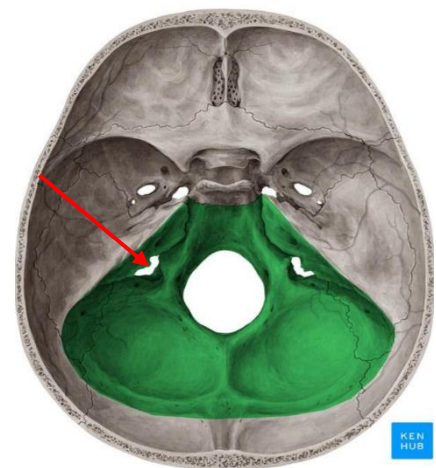
- b. Abducens nerve
- c. Superior division of oculomotor nerve
- d. Superior ophthalmic vein

45- Which of the following muscles is paralyzed when accessory nerve is damaged in posterior triangle?

- a. Scalene anterior
- b. Trapezius
- c. Sternomastoid
- d. Posterior belly of digastric

46- Which of the following passes through the structure indicated by the red arrow?

- a. Hypoglossal nerve
- b. External jugular vein
- c. Glossopharyngeal nerve
- d. b+c



47-Which of the following is wrong regarding the middle ear?

- a. The muscle on the posterior wall is innervated by a branch of trigeminal nerve
- b. It is separated from inner ear by the medial wall
- c. Its floor is related to the internal jugular vein
- d. None of the above is wrong

48-Which of the following is false regarding ciliary ganglion?

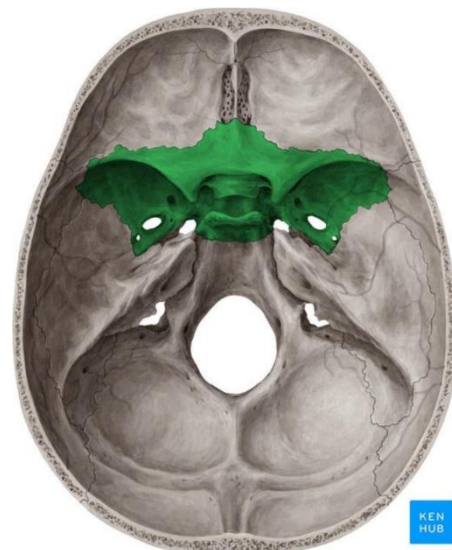
- a. It receives sympathetic fibers from a plexus around the internal carotid artery
- b. It is connected anatomically to the nasociliary nerve
- c. Fibers exit the ganglion as the short ciliary nerves
- d. It has fibers from the superior division of oculomotor nerve

49-Which of the following nerves isn't a cranial nerve?

- a. Great auricular nerve
- b. Hypoglossal nerve
- c. Abducent nerve
- d. Trochlear nerve

50-Which of the following doesn't pass through the highlighted bone?

- a. Middle meningeal artery
- b. Optic nerve
- c. Internal carotid artery
- d. Lesser petrosal nerve



ANSWERS

1	D	26	B
2	B	27	C
3	D	28	A
4	A	29	D
5	A	30	C
6	B	31	C
7	B	32	A
8	C	33	A
9	A	34	B
10	A	35	A
11	C	36	B
12	A	37	D
13	B	38	B
14	C	39	D
15	C	40	C
16	B	41	D
17	C	42	B
18	B	43	A
19	D	44	D
20	B	45	B
21	A	46	C
22	C	47	A
23	A	48	D
24	B	49	A
25	B	50	C

لا تطفئ لنا شغف ولا تسقط لنا قامة واجعل لنا مكاناً عالياً في الدنيا
والآخرة يا رب ✨✨

Ameen Alsaras

Good Luck!!